



Strategies for partnerships of business and NGOs for the protection of wetlands

Living Lakes 2019 – 15th International Conference on Lakes and Wetlands, 7 May 2019, València

Dr. Frank Hoffmann

About Wetlands International

A global NGO dedicated to conserving wetlands for Nature & People

- 20 offices worldwide, active in > 100 countries
- Local staff, international expert network
- Government membership
- Partnerships: CSO, government, **BUSINESS**




Rhine basin: business dependence on wetlands

FINANCIAL TIMES
OPINION WORK & CAREERS LIFE & ARTS HOW TO SPEND IT

Rhine drought leaves Europe's industry high and dry

Fuel and chemical supplies disrupted by plunging water levels on vital trade route



Norths of drought have hit water levels on Germany's Rhine river © Sepp Siegel/ROIP

David Sheppard in London and Guy Chazan in Berlin OCTOBER 25, 2018

Plummeting water levels in the drought-hit river Rhine are disrupting shipping and squeezing European supplies of important industrial commodities from coal to motor fuel.

Switzerland tanned its emerald

La sécheresse met à mal le transport fluvial sur le Rhin

© 201800116 V 15146

WIRTSCHAFT
DONNERSTAG, 31. NOVEMBER 2018

Spätfolge des Hitzesommers Niedrigwasser treibt Spritpreise nach oben



Langsamer Wasserstand bei Arnhem. Bestand © AP/WIDE

Dan zijn er ook nog de hogere kosten. Want een bedrijf dat goederen of grondstoffen van A naar B wil vervoeren en opense onder vervoer moet regelen, is meer geld kwijt. Ondernemersvereniging Evofenedax rekende deze extra



Restoration of the Rhine's 'sponge' function

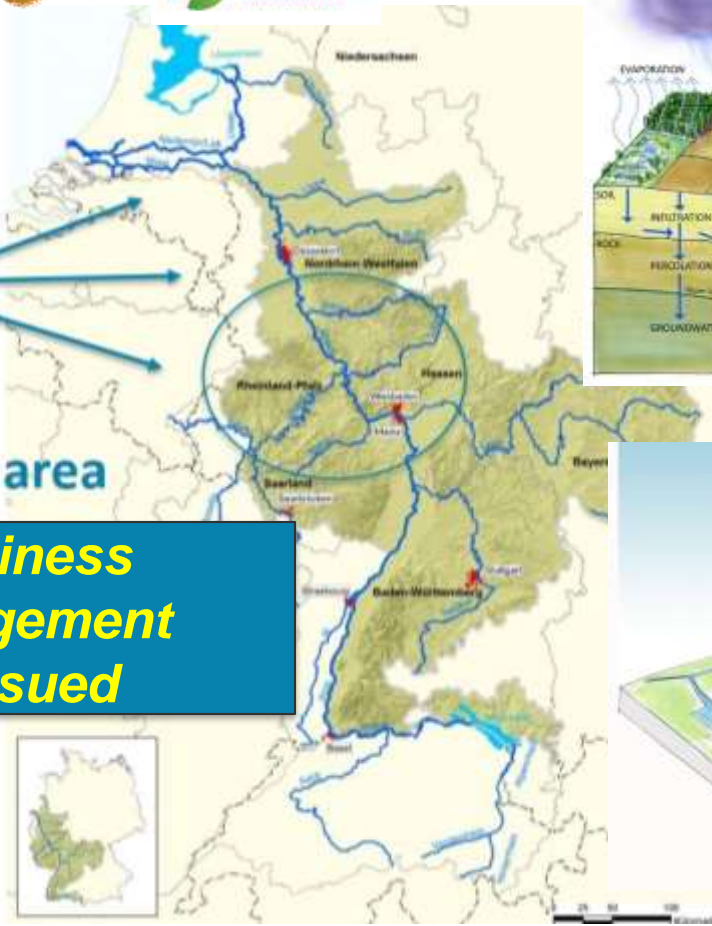
Basin approach: promoting climate adaptation measures upstream in Germany



Expected impacts

Focus area

Business engagement pursued

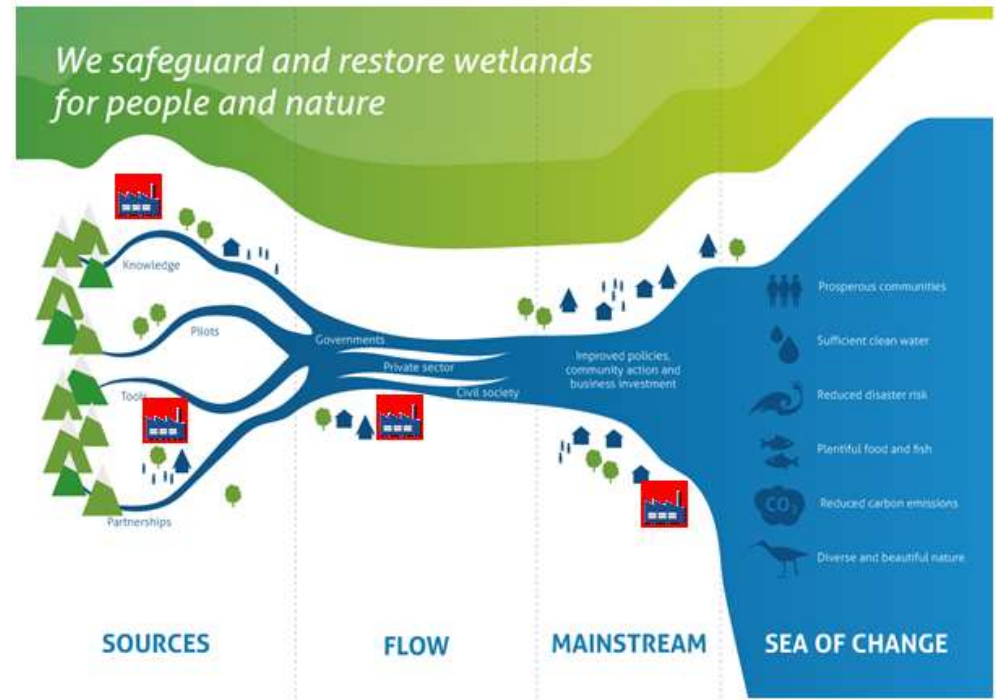


Landscape and/or basin approach

Companies: important stakeholders in a landscape

As:

- user of resources and space
- impact source
- economic entity
- social entity



Reasons to engage

Business cases for companies – but also for NGOs and governments

- Resilience against ecological disasters
- Safeguarding acquisition of natural resources
- Risk management and cost reduction
- Due diligence, regulations, legislation
- Improving legislation (particularly in 'weak' countries)
- Market position and clients
- Relations with investors
- Improved business image and reputation
- Stakeholder/consumer satisfaction

Philippines: Ridge to Coast, Rain to Tap

River Basin Approach with Business Engagement



Partnership in the Cagayan de Oro River Basin



1. Reduced flood risk through Integrated River Basin Management (IWRM)



2. Water supply infrastructure improvement & management

hinelebanfoundation



3. Improved Hygiene (and

FRR INDUSTRIAL TRADING CORPORATION



CAGAYAN DE ORO RIVERBASIN MANAGEMENT COUNCIL



Philippines: Ridge to Coast, Rain to Tap

Reforestation

PES

IWRM

Disaster Risk Reduction

Downstream businesses

Water Infrastr

WASH

Engage more businesses

Del Monte

Wetlands INTERNATIONAL

Vitens Evides International

The Netherlands Red Cross

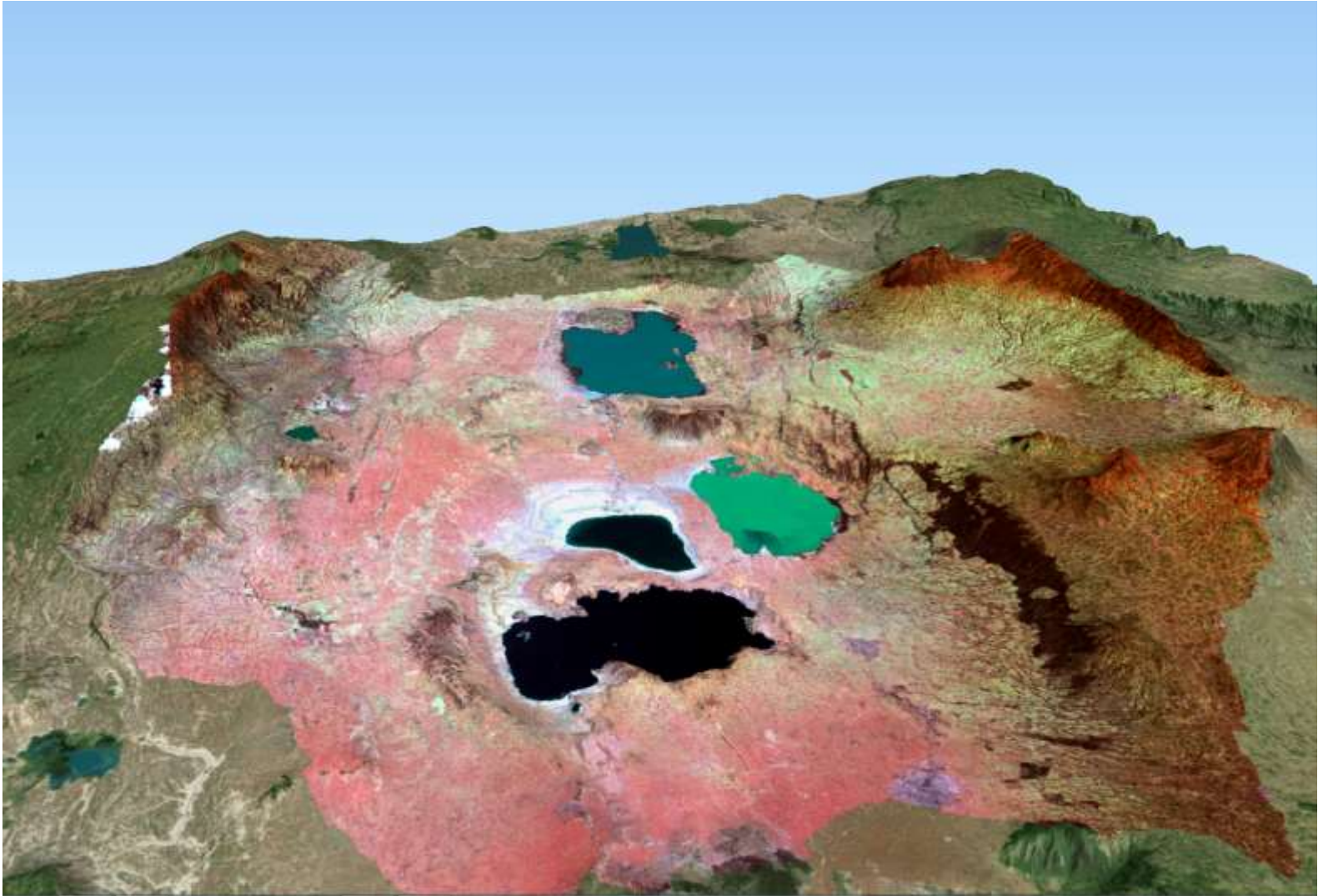
FOR INDUSTRIAL TRADING CORPORATION

hinelebanfoundation

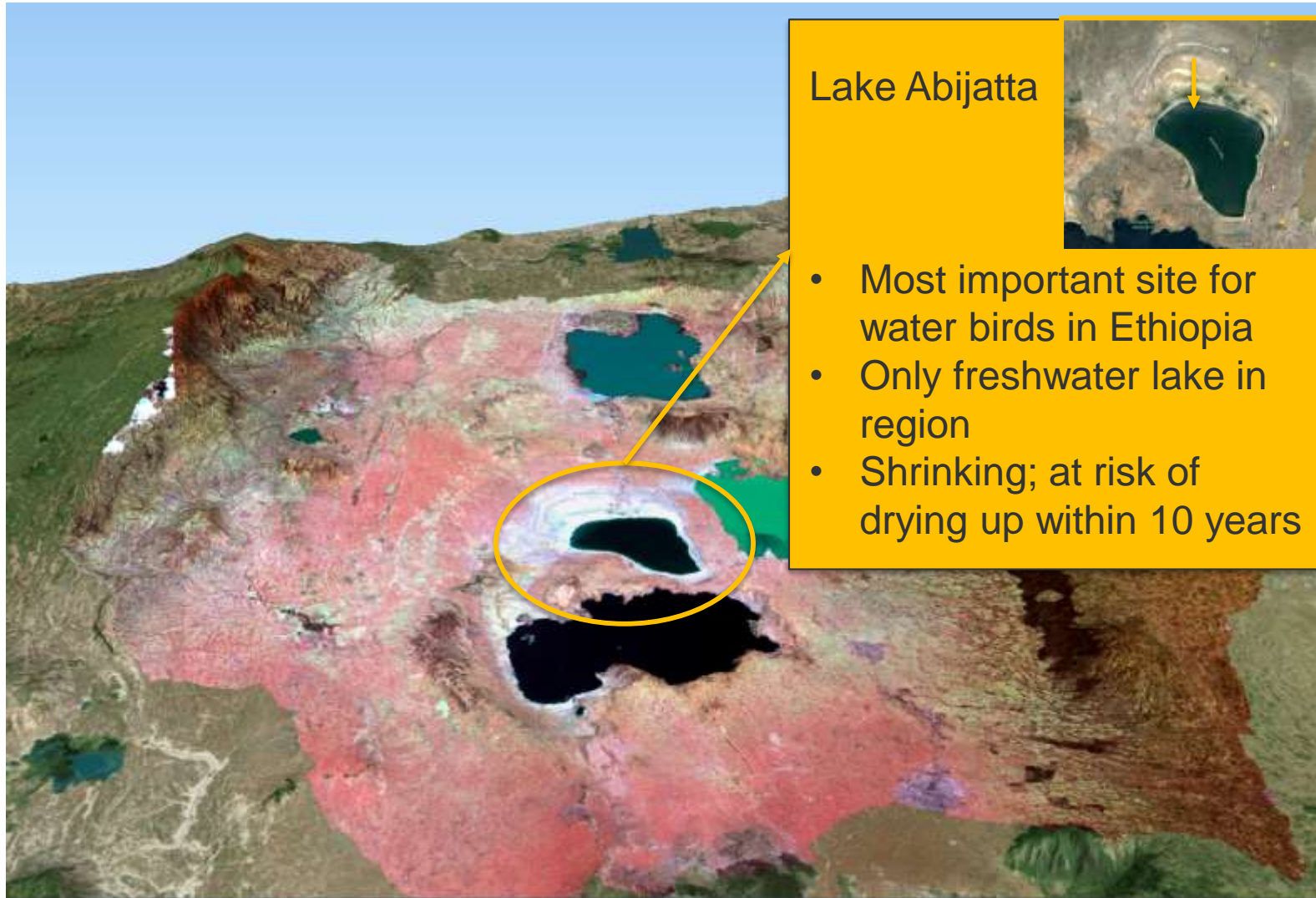
CAGAYAN DEL MOUNTAIN RIVERBASIN MANAGEMENT BOARD

Wetlands INTERNATIONAL

Ethiopia: Central Rift Valley Lakes



Ethiopia: Central Rift Valley Lakes



Ethiopia: Central Rift Valley Lakes



Lake Abijatta

- Most important site for water birds in Ethiopia
- Only freshwater lake in region
- Shrinking; at risk of drying up within 10 years



Central Rift Valley Lakes: Interventions

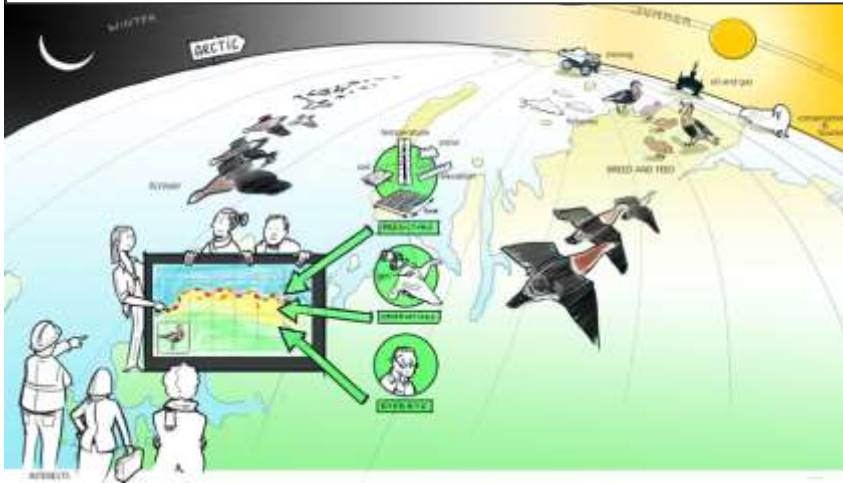
Landscape approach with all stakeholders, including business

- National Park: improving biodiversity value and community lives
- Institutional capacity building for lake/basin authorities
- Water Allocation Plan by/with **all stakeholders**
- **Improved small holder agriculture, with reduced water use**
 - > Efficient irrigation techniques from the rose farms
- **Watershed interventions in catchment**



Tools and practical approaches

Mapping Critical Habitat in the Arctic



Oil in the Mesopotamian Marshes in Iraq

- Worked with Shell Iraq to produce ESHIA and BAP
- opportunities, including contributing to the restoration of the marshes
- Capacity building programs



Oil production by Total in Murchison Falls National Park



- Independent Biodiversity and Livelihoods Advisory Committee
- IFC standard compliance
- Adapt design and operations
- Commitment of aiming to achieve Net Gain

Critical member of the Roundtable on Sustainable Palm Oil (RSPO)



Building with Nature & Green Engineering



From Building *in* Nature

To Building *with* Nature



1. Smart engineering
2. Restoring mangrove belts
3. Innovative techniques

Coastal restoration, Demak, Indonesia



Conclusions

For inclusive and sustainable development decisions

- It is crucial to engage with companies
- They are important stakeholders in the landscape
- They are often where 'the rubber hits the road'
- They have impact and know how to bring about change
- They often also have or adhere to performance standards
- Multi-stakeholder processes, direct engagement, tools for Natural Capital

Thank you!



 [Wetlands International](#)

 [@WetlandsInt](#)

 [Wetlands International](#)

